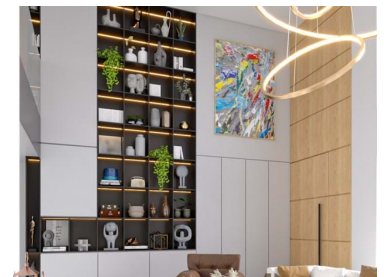




Quarteira - Villa



 5	 7	 577,22	 1353			N/A
Bedrooms	Bathrooms	Area (m ²)	Land Area (m ²)	Garage	Swimming Pool	(EUR €)

Villa T5 - Vilamoura, Loulé - For Sale

Vila Serena is an exceptional project under construction facing south, with 5 bedrooms, 7 bathrooms, basement and garage. It has 317.22m² of useful area, in a 1353.00m² plot with gardens, swimming pool and a total basement area of 260m².

This modern house has been designed for a functional and practical lifestyle without giving up all the luxury that a villa can contain as total home automation. On the ground floor you will find two en suite bedrooms, a living room, dining and kitchen in open space and harmoniously connected to the covered terrace space overlooking heated pool. The outdoor with grill, lounge and entertainment area.

In the privacy of the upper floor will feature 3 en suite bedrooms included the fantastic master suite with magnificent closet and balcony.



Thomas Caminho

911762970 ²

info@arqlizproperties.pt

T +351 911 762 970 ² · E info@arqlizproperties.pt
Estrada da Kadoc, Cerca da Areia, Edifício Liz, Boliqueime
AMI 19529

¹ (Call to national fixed network) | ² (Call to national mobile network)



Situated in the Algarve, south of Portugal, in the heart of Vilamoura 1km from the famous and award-winning Best Marina in the World 2022, this village is just 5 minutes from the golf and Falésia beach and 30 minutes from Faro International Airport.

Location:

Rua do Pombo Correio

Vilamoura

37.083167, -8.109536



Thomas Caminho

911762970 ²

info@arqlizproperties.pt

T +351 911 762 970 ² · E info@arqlizproperties.pt
Estrada da Kadoc, Cerca da Areia, Edifício Liz, Boliqueime
AMI 19529

¹ (Call to national fixed network) | ² (Call to national mobile network)



Property Features

- Heating
- Fitted wardrobes
- Fireplace
- Equipped kitchen
- Underfloor
- Proximity: Airport, Beach, Golf course, Restaurants, City, Hospital, Pharmacy, Public Transport, Schools, Public Swimming Pools
- Terrace
- Built year: 2023
- Laundry
- Basement
- Views: Pool view, Village view, Garden view
- Security alarm
- Double glazing
- Main drainage
- Quiet Location
- Parking space
- Barbecue
- Domotics
- Energetic certification: A
- Mains water
- Air conditioning
- Under floor heating
- Central vacuum system
- Walk-in wardrobe
- Pool
- Garden
- Garage
- Floors: 3
- Drive way
- Storage / utility room
- Video entry system
- Lift
- Electric garage gate
- Walking distance to beach
- Central location
- Solar heating
- Sealed land area
- Security door
- Solar orientation: South
- Balcony

**Thomas Caminho**911762970 ²

info@arqlizproperties.pt

T +351 911 762 970 ² · E info@arqlizproperties.pt
Estrada da Kadoc, Cerca da Areia, Edifício Liz, Boliqueime
AMI 19529

¹ (Call to national fixed network) | ² (Call to national mobile network)